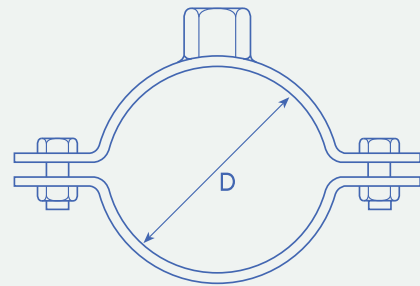


PIPE RINGS

Pipe Size NB (inches)	D (mm)	Width (mm)	Thickness (mm)	Boss (mm)
1/8	10.29	20	2.0	8
1/4	13.72	20	2.0	8
3/8	17.15	20	2.0	8
1/2	21.34	20	2.0	8
3/4	26.67	20	2.0	8
1	33.40	20	2.0	8
1 1/4	42.16	20	2.0	8
1 1/2	48.26	20	2.0	8
2	60.33	20	2.0	8
2 1/2	73.03	20	2.0	8
3	88.90	20	2.0	8
3 1/2	101.60	20	2.0	10
4	114.30	20	2.0	10
5	141.30	20	2.0	10
6	168.28	20	2.0	10



We also stock backing plates and threaded rod to suit.

STAINLESS STEEL FLANGES

Various flanges are available:

BS1560 (ANSI B16.5) from class 150 to 2500 lb inclusive.

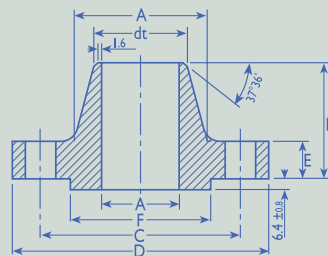
BS10 Table D to H.

BS 4504 Table 2.5 to 400.

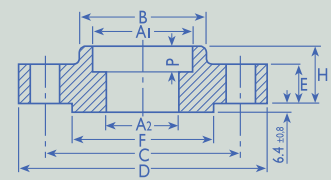
304, 304L, 316, 316L & 321.

All sizes.

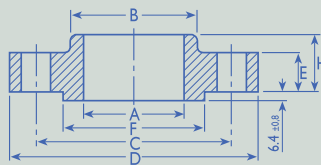
Please state style, grade, size and to what specification when ordering.



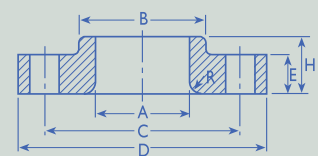
WELDING-NECK



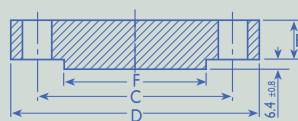
SLIP-ON



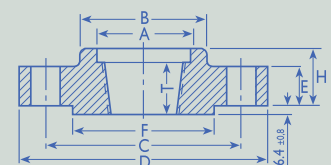
BLIND



THREADED



LAP-JOINT



SOCKET-WELD

